

# Smartfind S10 AIS Beacon

The Smartfind S10 AIS Beacon is an innovative manually activated personal safety device which incorporates both AIS (Automatic Identification System) and GPS technology. It is designed to aid the speedy recovery of personnel /crew members who find themselves in difficulty at sea.



- Manually activated personal safety device to aid recovery of persons in difficulty
- Transmits GPS target tracking information over AIS
- Unique serialized ID
- Small and light for unobtrusive carriage
- Waterproof and fully submersible to 60 meters
- Flashing LED light
- Minimum 24 hour continuous operation
- 5 year battery storage life

## SMARTFIND S10 AIS-BEACON SPECIFICATIONS

<b>STANDARDS APPLIED</b>	IEC 61097-14, 60945 (environmental/EMC), 61108 parts 1, ITU-R M.1371
<b>ENVIRONMENTAL</b>	buoyant
Exterior finish	Hi impact ABS/PC Translucent opal
Sealing depth	Immersion to 60m (196 ft)
Operating temperature	-20°C to +55°C (-4°F to +131°F)
Storage temperature	-30°C to +70°C (-22°F to +158°F)
<b>BATTERY</b>	
Type	6V Lithium Metal
Replacement	By service centre
Use	Logged by microcontroller
<b>OPERATION</b>	
Activation	Manual two stage
Self test (short)	Battery use indication
GPS Self test (long)	SART TEST transmission with GPS position
<b>TRANSPORTATION</b>	
Air cargo	UN 3091, not restricted
Classification	Non-hazardous
<b>ELECTRICAL</b>	
<b>AIS Transmitter</b>	
Frequency	AIS channel 1- 161.975 MHz, AIS channel 2 - 162.025 MHz
Power	2W nominal
Transmit antenna	Integrated PCB
AIS messages transmitted	Message 1 (UID, GPS position, SOG, COG, UTC) Message 14 (SART-ACTIVE or SART TEST) Factory programmed
Unique ID number	
<b>GPS receiver</b>	
GPS type	50 channel
Antenna type	Ceramic patch
GPS position update	Every minute
<b>PHYSICAL</b>	
Length	195mm (9.7")
Diameter at widest point	44mm ( 1.7")
Weight	150g ( 5.29 oz)
<b>Deployment</b>	
Hands free	Head band option
Hand held	Wrist lanyard included
Security	lanyard fixing point
<b>FUNCTIONAL</b>	
First transmission	After 10 seconds (no GPS)
Range	4 nautical miles (typical)
Secondary location device and status indicator	Flashing white LED
<b>PART NUMBER</b>	
Smartfind S10 AIS Beacon retail pack	98-051-001A
Head Band option	T.B.A.
Diver net bag option	T.B.A.
Padded belt bag option	T.B.A.

Dealer:

This device has not been authorized as required by the rules of the Federal Communications Commission. This device is not and may not be offered for sale or lease, or sold or leased, until authorization is obtained.

McMurdo Ltd. Silver Point, Airport Service Road,  
Portsmouth. PO3 5PB. United Kingdom  
Tel: +44 (0) 23 9262 3900 Fax: +44 (0) 23 9262 3998  
E-mail: sales@mcmurdo.co.uk www.mcmurdo.co.uk

Please note that all information given in this brochure is intended to be useful and informative and is correct to the best of our knowledge at time of print. No liability can be accepted for inaccuracies or omissions. The right is reserved to amend this information without prior notice.



Issue 1, February 2011

**mcmurdo**  
SAFETY FOR PROFESSIONALS

# Smartfind S10 AIS Beacon



Lifesaving for anyone  
who works on or around water

## What is Smartfind S10 AIS Beacon?

The Smartfind S10 AIS Beacon is an innovative manually activated personal safety device which incorporates both AIS (Automatic Identification System) and GPS technology. It is designed to aid the speedy recovery of personnel/crew members who find themselves in difficulty at sea.

Smartfind S10 is waterproof, buoyant and compact, intended for carriage by divers, crew and anyone who works on or carries out leisure activities on the water.

When activated the Smartfind S10 transmits a unique alert signal to all AIS enabled equipment within the vicinity, signalling that help is required in a man overboard or lost diver situation.

The Smartfind S10 transmits target survivor information, including structured alert messages, GPS position information and a unique serialised identity number. An inbuilt high precision GPS receiver provides accurate position information which is frequently updated to assist in quick recovery of persons in difficulty.

S10 AIS Beacon target information can be viewed using standard ships AIS equipment such as Class A and Class B transponders and a wide selection of receive only AIS units. AIS equipped vessels and land based VTS stations within the local vicinity will also have visibility of the AIS-beacon signal.

Whether displayed on the AIS itself or on a companion plotter or ECDIS screen, the unique alert message will clearly indicate the Smartfind S10's exact location, range and bearing.

Smartfind S10 is waterproof to 60 meters, will transmit continuously for a minimum of 24 hours and has a 5 year battery storage life. It also features a flashing indicator light, giving a localised visual fix and assisting in attracting attention after nightfall.

## Simple to activate

Smartfind S10 AIS Beacon is simple to operate, even in a gloved hand, and it is equally simple to switch off when the person in trouble has been successful retrieved from the water. Smartfind S10 also features a built in test facility, battery use is indicated in order to determine whether future carriage or battery replacement is advised.



## How Smartfind S10 AIS Beacon works

- Smartfind S10 AIS Beacon is activated to attract attention.
- A unique alert is transmitted to all AIS enabled equipment within a 4 mile Radius (typical).
- AIS equipment\* displays the alert icon (pictured below)

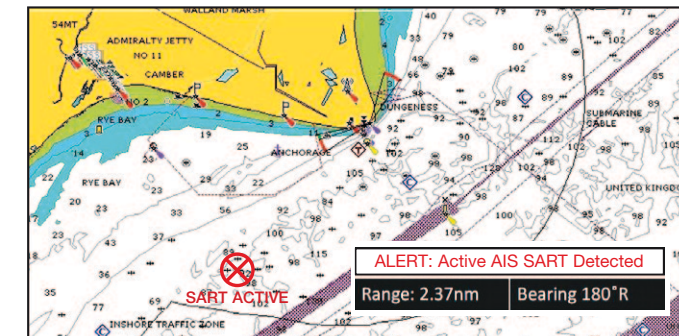


Chart data from Navionics  
Dialogue box for illustration purposes only

- Precise target survivor information including GPS position becomes viewable when the chart plotter/ECDIS\* cursor is positioned over the alert icon.
- This information provides exact location, range and bearing to person(s) in need of assistance.

\*For use with AIS enabled chart plotters, contact your chart plotter manufacturer for further info.